

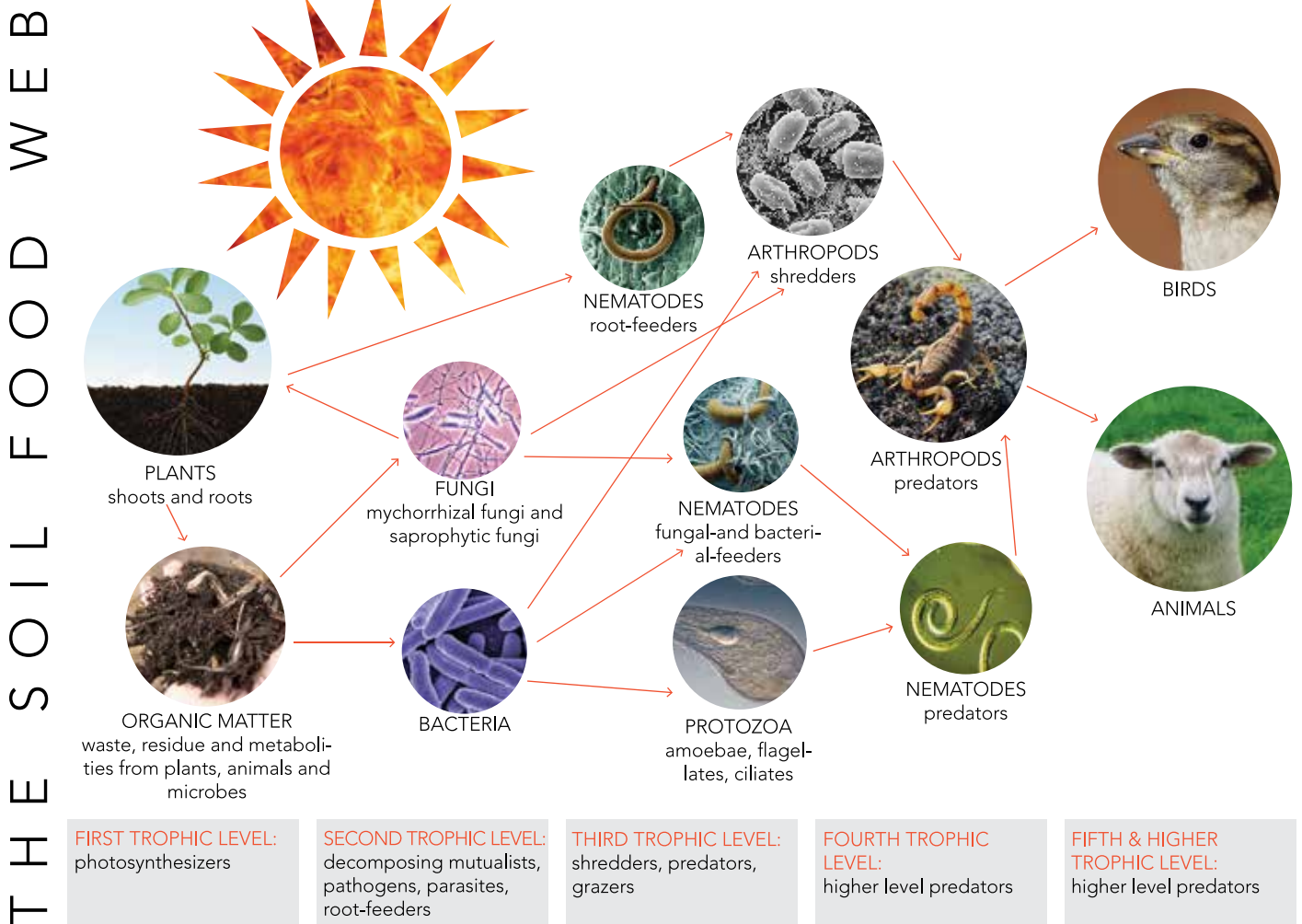


BETTER
Organix

PRODUCT CATALOGUE

BETTER ORGANIX

What **Better Organix** does is to establish or restore an active soil food web, which is the basis of soil fertility in organic growing. "The soil food web" is an interconnected network of bacteria, fungi, protozoa, nematodes, arthropods, earthworms, birds & animals and is the supply chain for all our soil and plants' needs. Healthy organic soils are achieved by avoiding the addition of toxic chemical inputs whilst maintaining suitable levels of organic matter. A balanced soil food web supports carbon capture, soil stabilisation and aeration, water and nutrient retention and cycling, and ultimately plant fertility.



With the soil food web in mind we designed a range of organic and veganic products that work perfectly as standalone solutions. When combined, these have proven to be a powerful, clean and balanced organic system that delivers everything our plants need across their life cycle, abundant harvests, healthy vigorous growth, nutrient dense food and nose filling perfumes from our flora, while protecting the all-important soil.

THE BETTER ORGANIX RANGE

Better Organix Granular Beneficial Microbes and Fungi...

...foundations for every plant living on earth.



Bio-Media Pro adds free ranging microbes to the soil. Mixed with chlorine free water and applied across the media, they work instantly to quorum sense each other, as well as food sources. These microbes do not need a plant to survive, they have evolved to respond to chemical signatures, called exudates, which are secreted by the plants via their root system. This brings them in close contact with plant roots, which are able to consume the nutrients these microbes have made plant available. They also secrete health benefits to the soil, reducing pathogens and sequestering pollutants, the movement of these organisms through the media leads to better aeration, while retaining vital water and nutrients, preventing nutrients in particular from leaching and/or binding to cause pH and electrical flux and/or soil compaction.

Root Better is a blend of beneficial root fungi, which form symbiotic relationships with plants, becoming an extended root structure, which degrades complex carbohydrates into constituent parts ready to be absorbed by our plants in the form of Oxalic Acid crystals and proteins. They find and feed our plants Nitrogen, Potassium and a myriad of other elements stored along the fungal hyphae for use by the plant as and when required. Fungi need a plant and/or organic matter to survive, so **Root Better** is best applied directly to seeds, transplant roots or simply watered into in situ plants. Once established **Root Better** acts as an extended stomach, forager and protector of our plants, It defends against pathogen molds, reduces stress and improves flavour and essential oil production for example.

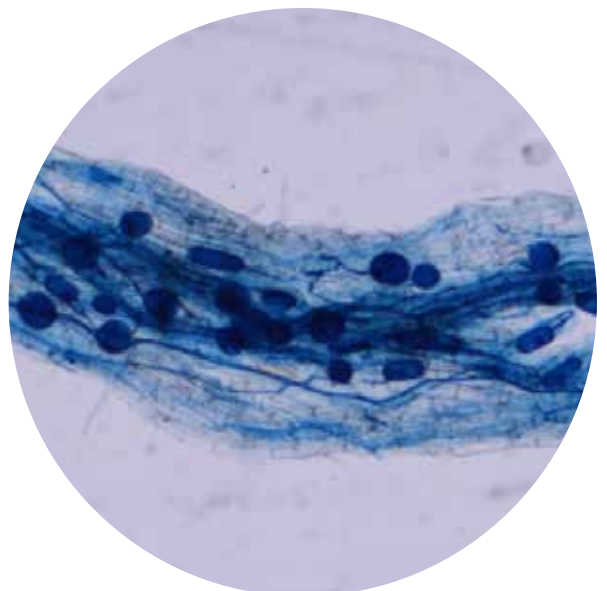


Better Organix Liquids...

...feed soil microbes, which in turn keep our plants healthy and productive

Bio-Hydrate is a next generation wetting agent, it ensures an even soaking and distribution into any growing media, of both water and nutrient solutions. It increases media aeration to root systems and plant access to nutrients. **Bio-Hydrate** Improves plant health, crop uniformity, helps develop strong disease-free roots with a reduction in overall water inputs. It works in combination with **Root Better** by stimulating beneficial fungal colonisation. It can also be used in foliar applications giving exceptional effects. Use across the entire growth cycle.

Bio-iNitiata is a dual action 100% plant derived fertiliser and bio-stimulant specifically tailored for use, in combination with mycorrhizal and bacterial applications such as **Bio-Media Pro** and **Root Better**. Rich in gentle forms of organic Nitrogen and amino acids, it will kick start





young plants without hindering growth and colonisation of microbial life and therefore improving disease resistance and stress tolerance. Use across the full growth cycle on all plants and crops grown in high Phosphorous soils when used in combination with **Root Better**. Combined with **K+Amino** it acts as a powerful bloom system. NPK 5-0-2.

Bio-Veg is a 100% organic powerful dual action fish based fertiliser and bio-stimulant. Combining readily available organic Nitrogen, Phosphate and Potassium as well as around 60 trace elements and amino acids essential for optimising plant growth & maintaining soil health. A perfect all round feed, it contains a mass of just about everything a plant will ever need. It helps cater for the widest range of plant species. This is an awesome product for growing massive plants. Continued use develops and maintains essential soil micro-biology crucial to maintaining a healthy environ-

ment. For plants with young small roots where mycorrhizal colonisation may be incomplete, but requiring additional macro and micro-elements, use as a foliar application. NPK 8-7-7.

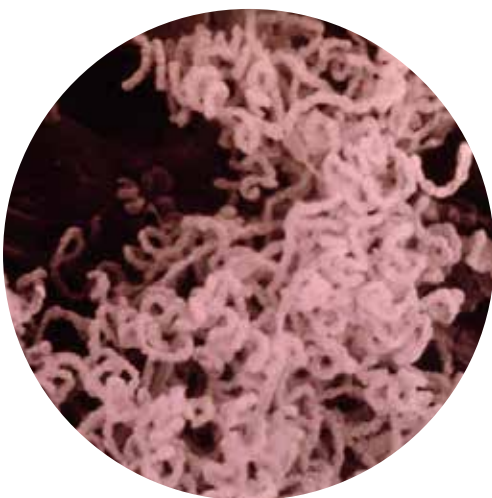
Bio-Floret is a dual action 100% plant derived organic fertiliser and bio-stimulant, rich in proteins to feed microbial growth. Ideal for indoor and outdoor use, It combines sugars, proteins, carbohydrates, Carbon isotopes specific to the development of BRIX rich nutrient dense food, fruit and blooms. High in organic Potassium crucial to ensuring high quality and flavour; it delivers exceptional growth and is an ideal application for short day crops after the plant has finished stretching. NPK 3-0-8.

K+Amino is a 100% organic/veganic plant derived additive which contains a mass of naturally occurring aerobic soil and plant microbes, Trichoderma root fungus, active beneficial soil molds and Nitrogen fixing bacteria. Use it at all stages of plant development and it works in tandem with all Better Organix products. Combined with **Bio-iNitiata** it acts as a powerful bloom system. This is a magical product, it will grow anything, it's a great plant tonic, soil restoration treatment and seed-dip. Expect to see faster, healthier growth, resulting in larger, more vigorous plants. Application is weekly or bi-weekly up until about 2 weeks before harvest. NPK 1-0-6.



Nano Products...

...offer easy, economical delivery of additional Co2 and more.



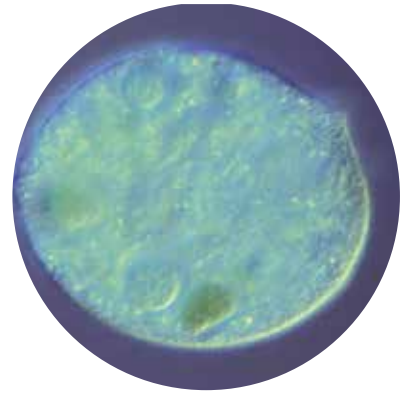
Nano Breathe is a plant foliar application for super boosting the growth potential of plants. Literally increasing your plants ability to process light by UP TO 33%, it contains essential micro-elements, crucial for plant development during all stages of growth as well as improving disease and drought resistance. It acts both on the leaf surface and at an intercellular level inside plants to boost CalMag and Iron. **Nano Breathe** raises concentrations of CO₂, improving plants' response to photosynthesis, which equates to more rapid growth, higher yields and less input energy waste, reduces premature fruit drop, and extends product shelf life. Suited for indoor and outdoor use. Apply once every 3-4 weeks after 3 full leaf sets are formed or after each 20% of new growth.

Better Organix Balance Products...

...containing organic acids which help to regulate media and plant pH systems

Bio-Balance Media and **Bio-Balance Foliar** improve soil health with over 60 trace minerals essential to plant growth and soil health. Both products contain, minerals and nutrient EC/pH balancing properties and key minerals required throughout all stages of growth. Both improve drainage & soil structure and are the answer to soil compaction problems and reducing heavy metal uptake. They also chelate Iron among other micro-elements and provide essential carbohydrates for bacterial nitrogen fixation.

Bio-Balance Media contains Potassium, which should be considered when mixing with bloom nutrients. **Bio-Balance Foliar** can also be used as a drench and has a wider pH operating range so works better in hydroponics and other "soilless" media types.



Visit our website

www.betterorganix.com

for more information follow us on

Facebook: [BetterOrganix.com](https://www.facebook.com/BetterOrganix.com)

or buy online

ebay.co.uk





Standard stock sizes
50g & 1kg packs.
Other sizes available to
order. Please contact us
for further details.

What is Bio-Media Pro?

Bio-Media Pro is a pre planting soil and media treatment which contains a high count of well-known beneficial, free ranging soil microbes, that mineralise many of the vital elements our plants need to grow into healthy productive crops and blooms.

Why should I use Bio-Media Pro?

Plants have existed in the wild with the help of soil microbes for billions of years here on planet earth. By adding Bio-Media Pro to your plant media you will help them maintain the distinct evolutionary advantages this partnership offers, these include:



When should I use Bio-Media Pro?

Use Bio-Media Pro before you plant up into your potting soils or coco media. Adding Bio-Media Pro to your media allows the microbes to get a head start on converting organic matter and elements into useable plant ions, preparing more ideal conditions for your crops.

How do I use Bio-Media Pro?

Bio-Media Pro should be added to dechlorinated water at a rate of 5g to 5L (1tsp/10.5 pints U.S.)

This can then be drenched through your media before you plant up.

We add only enough solution to adequately wet the media, we try to limit any solution run off, so maintaining maximum effect with less wasted microbes overall.

Coco growers will need to make a note of this when using Bio-Media Pro. We do not run Bio-Media Pro to waste and this may be counter to how you water such media for buffering, as an example. In Coco we suggest bi weekly top ups of Bio-Media Pro to maintain sufficient biology across the grow, whilst allowing users to maintain existing practice of run off applications of other nutrients and additives.

What media types are suitable for Bio-Media Pro?

Bio-Media Pro can be used in most media types excluding those requiring an acid environment below pH 6.2. Suitable for indoor and outdoor use.

What is the pH range of Bio-Media Pro?

Bio-Media Pro can be used safely at pH ranges from 6.2 to 7.5. It can be used on all media types within this range. Solutions lower than pH 6.2 will result in many of the microbes becoming ineffective. It is not harmful, rather just wasteful in our opinion.

"Nature's way of providing unparalleled drought, pathogen and toxin protection. Improves access to vital growth resources crucial for healthy plants. Maintains availability of problematic elements such as Phosphorus."



Standard stock sizes
50g & 1kg packs.

Other sizes available to
order. Please contact us
for further details.

What is Root Better?

Root Better is a plant root and seed treatment for most common plant types. It is a combination of growth promoting and stress reducing fungi and their related biomes of bacteria.

Why should I use Root Better?

Plants have formed long standing relationships with fungi in nature for billions of years. Many fungi types associate with our plants via direct root cell insertions, or via a protective sheath that engulfs our plants' own root system. Plants that have associations with beneficial root fungus such as those found in Root Better, have dramatically increased access to growth promoting elements and health promoting compounds, without which, our plants are far less viable.

Plants treated with Root Better have far higher germination rates from seed, reduced damping off related problems and typically grow faster with higher end yields on many common fruit and veg crops. Direct benefits include:



When should I use Root Better?

Apply Root Better at any time during the growing cycle of your plant but it works best when we apply it to seeds or dust the root balls of existing transplants when re-potting. If used in organic systems Root Better need only be applied once, although we recommend repeat applications of Root Better when transplanting to larger containers.

If you have an existing plant and want to add Root Better, you can do this by simply adding it to your usual irrigation water.

How do I use Root Better?

When working with dry powder and transplants, we aim for about 1g of material per plant. This can be lightly dusted directly onto your root balls and root plugs where the spores of Root Better fungus will colonise your young plants' root system, immediately extending the reach of your plant to access sources of food and water which might otherwise be out of range. Indeed beneficial root fungus are known to increase our plants root surface by many thousands of times, creating a secondary system upon whose resources plants depend.

If adding to existing plants, we suggest 5g (1 tsp) per 5L of chlorine free water, pour to drench the media.

TIP: Do not allow too much over run in order to maintain a higher portion of spores inside your planting media.

What media types are suitable for Root Better?

Root Better works on all media types and has a wide pH range, from 5.8 to 7.5. It works best in soil and coco based media, but equally, can be used on Rockwool and other hydro substrate types with good results. The product contains beneficial fungal types and bacteria known to inhibit many common molds and rots in all media.



Standard stock sizes
100ml & 1L bottles.
5L, 10L, 20L, 200L &
1000L available to order.
Please contact us for
further details.

What is Bio-iNitiatae?

Bio-iNitiatae is a dual action, 100% plant derived fertiliser & bio stimulant tailored specifically for use in combination with mycorrhizal and bacterial applications such as [Root Better](#) and [Bio-Media Pro](#).

Why should I use Bio-iNitiatae?

Bio-iNitiatae is rich in gentle forms of organic Nitrogen and amino acids, perfectly suited to kick start young plants without hindering the growth and colonisation of your microbial life. Also contains sources of Carbon which actively increase the effects of your mycorrhizal and beneficial bacteria, as well as key nutrients needed by the plant during early growth.



When should I use Bio-iNitiatae?

Apply [Bio-iNitiatae](#) during early growth stages and for the full growth cycle on all plants and crops in high Phosphorus soils when used in combination with mycorrhizal fungi products such as [Root Better](#).

How do I use Bio-iNitiatae?

[Bio-iNitiatae](#) should be added to chlorine free water at a rate 1-5ml per litre as required, typically from 2 weeks after seeding. Can also be used with K+AMINO as a powerful bloom system and is safe to use with all biological treatments and bloom schedule tea regimes.

What media types are suitable for Bio-iNitiatae?

[Bio-iNitiatae](#) is a versatile product, add it to any soil or hydro based media, both as a direct feed, or via a nutrient irrigation system.

What is the pH range of Bio-iNitiatae?

In soil systems with active biology, such as those promoted by the Better Organix system, pH should not be relevant. In soilless and hydroponic substrates you may need to pH the solution to keep within acceptable tolerance levels determined by your media choice. We only recommend organic pH down agents, such as Better Organix BioKind pH down, or Citric Acid based options.



Standard stock sizes
100ml & 1L bottles.
5L, 10L, 20L, 200L &
1000L available to order.
Please contact us for
further details.

What is Bio-Veg?

Bio-Veg is an organic liquid plant fertiliser, bio-stimulant and soil conditioner. It contains an NPK ratio of 8-7-7, has a full complement of macro and micro-nutrients, including essential minerals and vitamins, alongside amino acids, enzymes, organic acids and phyto hormones that support healthy vigorous plant growth across a wide range of plant types. **Bio-Veg** is dual purpose, it both directly feeds plants and contains stimulants that actively encourage the development of beneficial microbes.

Why should I use Bio-Veg?

Bio-Veg is 100% organic, all of the ingredients are ethically sourced and 100% natural. It contains fish hydrolysate alongside plant boosting sea minerals, organic acids and bio-stimulant amino acids specific to plant root, stem and leaf development. Using **Bio-Veg** can set the foundations for genetic potential to be realised come harvest time. **Bio-Veg** grows big plants and fast, without harming the environment. It promotes active biology and good media/plant health, it:



When should I use Bio-Veg?

Bio-Veg works as an all round plant feed. However with short day crops, we apply **Bio-Veg** right up or to transition and flower set, the point at which the light levels are typically reduced in indoor grows. **Bio-Veg** works as a great solution during the pre flower set phases of growth which can see the largest portion of stem and leaf growth.

Bio-Veg is applied for the first time in the Better Organix system at or around week 4 from seed, or week 2 from transplant. Your plant will be established at this time. This period is often referred to as the Vegetative Cycle. Use **Bio-Veg** continuously as a feed or use it in a grow/bloom feed system with **Bio-Floret** in reduced light.

How do I use Bio-Veg?

Bio-Veg can be applied at a range between 0.5 to 2ml/L (1/20th to 2/5th tsp per 2pints US). It should be applied to chlorine free water and can be applied at lower levels with each feed, or at the maximum level once a week, either as a drench or foliar application.

For soil users: It is recommended you wait to use **Bio-Veg** until you have an established root system to avoid over powering young plants. Typically this is on or around week 4 of growth from seed, or 2-3 weeks after initial transplant.

Coco and hydro users can apply with each irrigation at the lower level, upping levels as required to the maximum 2ml/L. We recommend hydro users adjust the pH of **Bio-Veg** in line with media recommendations to ensure best effect and use a product such as **Bio-Balance Foliar** to ensure lines and drippers remain clear of organic matter, prolonging equipment life and reliability.

What media types are suitable for Bio-Veg?

Bio-Veg is a versatile product, add it to any soil or hydro based media, both as a direct feed, or via a nutrient irrigation system.

What is the pH range of Bio-Veg?

In soil systems with active biology, such as those promoted by the Better Organix system, pH should not be relevant. In soilless and hydroponic substrates, you may need to pH the solution to keep within acceptable tolerance levels determined by your media choice. We only recommend organic pH down agents, such as Better Organix BioKind pH down, or Citric Acid based options.



Standard stock sizes
100ml & 1L bottles.
5L, 10L, 20L, 200L &
1000L available to order.
Please contact us for
further details.

What is Bio-Floret?

Bio-Floret is an organic liquid plant fertiliser and biological stimulant specific to flowering and fruit based crops. It contains an NPK ratio of 3-0-8 and is best suited for growth and the development of rich fruits and flora, across a wide range of blooming and flowering crop types. **Bio-Floret** is a dual purpose liquid in that it both directly feeds plants and contains stimulants that actively encourage the development of beneficial microbes, especially those known to have positive impacts on flowering crops.

Why should I use Bio-Floret?

Bio-Floret is 100% veganic, all of the ingredients are plant sourced and 100% natural. It contains the power of Carbons and is custom blended to get the very best from our flowering crops. The sugars and carbohydrates contained in **Bio-Floret** ensure a rich production of essential oils and high BRIX fruit and veg, with carefully selected fruit and flora boosting minerals, amino acids and enzymes known to have positive impacts on sugar uptake for example.



When should I use Bio-Floret?

Bio-Floret works as a flowering cycle plant feed, typically applied during the bloom/flowering cycle of a plants' development. Indoors, **Bio-Floret** is applied for the first time in the Better Organix system once your plant has been switched to a shorter day cycle (12/12). In outside spaces it's applied at first sign of flower.

It can then be used continuously as a single feed or with other flowering/bloom additives, such as **K+AMINO**. It can be used to great effect in a grow/bloom feed system with **Bio-Veg**, especially where plants are known to substantially increase size during transition to flower. **Bio-Floret** can be used up until harvest, although we advise reducing to half dose in the days prior to harvest.

How do I use Bio-Floret?

Bio-Floret can be applied at between 0.5 and 2ml/L (1/20th to 2/5th tsp per 2pints US) of chlorine free water. Add at lower levels with each feed, or at the maximum level once a week as a drench or foliar application.

Coco and hydro users can feed with each irrigation at the lower level, upping levels as required to the maximum 2ml/L. We recommend hydro users adjust the pH of **Bio-Floret** in line with media recommendations for best effect. Use a product such as **Bio-Balance Foliar** to ensure lines and drippers remain clear of organic matter, prolonging equipment life and reliability.

What media types are suitable for Bio-Floret?

Bio-Floret is a versatile product, add it to any soil or hydro based media, both as a direct feed, or via a nutrient irrigation system.

What is the pH range of Bio-Floret?

In soil systems with active biology, such as those promoted by the Better Organix system, pH should not be relevant. In soilless and hydroponic substrates you may need to pH the solution to keep within acceptable tolerance levels determined by your media choice. We only recommend organic pH down agents, such as Better Organix BioKind pH down, or Citric Acid based options.

"If in doubt - get the K+AMINO out."



Standard stock sizes
100ml & 1L bottles.
5L, 10L, 20L, 200L &
1000L available to order.
Please contact us for
further details.

What is K+AMINO?

K+AMINO is a liquid soil amendment for organic gardens and all media types. It is a 100% veganic growth and health promoting liquid microbial inoculant for all plant types, especially suited to fast growing crops such as vegetables, fruits and blooms. **K+AMINO** contains organic and bacterially activated Nitrogen and organic Potassium growth elements, highly suited to a wide range of plant types. **K+AMINO** also contains plant available Silicon and a myriad of chelated micro-nutrients, essential for helping our plants maintain internal balance. It promotes healthy, abundant growth particularly in vegetables, fruits and flora though it works equally well for most perennials, trees, shrubs and even picky orchids and ornamentals. **K+AMINO** contains phyto hormones, enzymes and vitamins, all in natural form and essential for good plant/soil health.

Why should I use K+AMINO?

K+AMINO has a living biome of both beneficial free ranging soil bacteria, plant associating fungi and molds in both live and spore states. The quantity of aerobic spores is approximately 32/grams of material (dry-weight basis) which is extremely high, ensuring the likelihood of good plant/microbe colonisation.



When should I use K+AMINO?

K+AMINO really is an all round growing aid. It can be used on all cycles of plant growth, from seeds as part of a soak and seedlings as a gentle growth promoter, stimulating both root development and above ground branching. It can also be used to stimulate flower production, enhance essential oil production and sugar uptake. The key to this is in the resonant high quality microbes, plant ready growth compounds and hormones. Abundant chelated organic Calcium and Potassium maintains an extremely high calibre of taste and appearance in foods and blooms and clever microbe modulations improve the shelf life and quality of harvests. **K+AMINO** helps create nutrient dense foods, it helps us keep produce fresh for longer, it increases the potency of perfumes and colour of our flora. It does all of this without harming the environment, our water systems, and beyond. It can be used as a major plant feed in high organic media, or in combination with both grow and bloom nutrients from Better Organix and/or other nutrient manufacturers. It is very easy to use requiring no specialist equipment. It is very powerful, entirely safe and hard to over use.

How do I use K+AMINO?

Adding 0.5 to 1ml/L of chlorine free water once a week is more than enough for most plant types. More nutrient responsive plants can go as high as 5ml/L but this is rare. It is hard to burn or over feed. However, we advise you start at the lower dose and work upwards as you feel you need. **K+AMINO** is versatile, it can be used as a simple soil drench in a watering can, added to automatic feeding systems and applied as a leaf foliar. When applying as a foliar, it can be added on its' own to great and near instant effect, or to other leaf based treatments and organic wetting agents such as **Bio-Hydrate**, we advise bi-weekly treatments when foliar feeding **K+AMINO**.

What media types are suitable for K+AMINO?

K+AMINO can be used on all media types, from soil to hydro.

What is the pH range of K+AMINO?

The pH value of **K+AMINO** is between 6.0 - 7.0. The product contains live bacteria and so over time as colonies grow and bio film levels increase, the pH of the liquid can rise. This is a natural process and occurs in all bacterial systems since they modulate the local environment to best suit their function. If this happens, simply adjust the pH of the watering solution using Citric acid or other pH down product before application on acid loving plants.



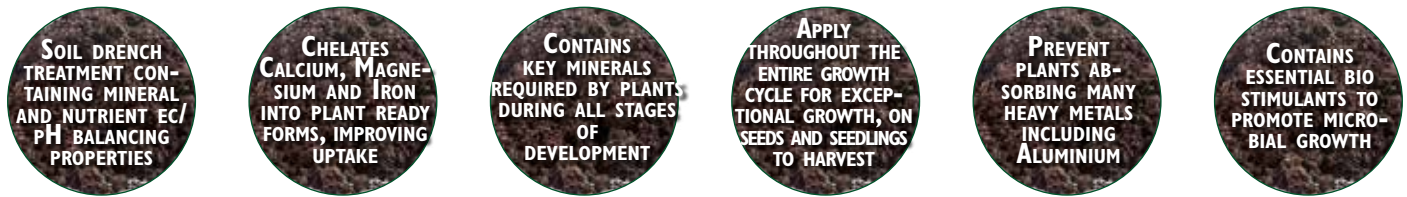
Standard stock sizes
50g & 1kg packs.
Other sizes available to
order. Please contact us
for further details.

What is Bio-Balance Media?

Bio-Balance Media is a soil drench treatment rich in humates, humic & fulvic organic acids and Potassium (10% K₂O, dry weight).

Why should I use Bio-Balance Media?

Naturally derived humic powder acts to improve the conditions of growing media, aggregating particles, improving capacity for growing media to hold air & water and to balance nutrients into plant ready forms, preventing plant vital nutrient leaching and protecting plants by restricting absorption of heavy metals/toxins through plant root systems. HUMATES, HUMIC AND FULVIC ACIDS are a major part of soil organic matter and can be used to stimulate beneficial soil fungi populations, increase soil cation exchange capacity and provide organic and mineral plant nutrients for improved plant growth. Bio-Balance Media is suitable for all plant types, grass, flora, trees, shrubs and vegetables.



When should I use Bio-Balance Media?

Bio-Balance Media can be applied across the growing season to harvest, at least once every 28 days. It can be applied more frequently if desired or in heavily managed systems or sandy soils. Bio-Balance Media can be used as a stand alone product, or with any other nutrient, organic or chemical, as both a soil drench or a foliar application. Outside, Bio-Balance Media can be a useful gardening tool to assist plant growth in cold, low light conditions, or to limit stress caused by drought and high heat. It can also assist in the prevention and management of soil compaction. The organic acid in Bio-Balance Media carries large amounts of Oxygen and works well in all spray and drip systems when managed correctly.

Bio-Balance Media helps to scavenge free radical ions which are a root cause of soil compaction, pH imbalance and root stress in managed systems as well as in nature. Bio-Balance Media can be applied throughout the season or as required as a plant tonic and is best applied once soil temperatures reach 5C/41F.

How do I use Bio-Balance Media?

Bio-Balance Media is a powerful product, it should be pre mixed and tested before adding to tanks and sprayer systems, standard for all inputs. When using in spray or dripper systems, be sure to filter out any undissolved sediment to prevent nozzle blockages.

The rate of application is 1g per 4L (1/5 tsp per 1.2 gallons US).

Bio-Balance Media can be mixed with all Better Organix nutrients and bio products, it can also be mixed with inorganic nutrients but should be tested as best practice, due to its' high alkalinity.

Solutions should be drenched through your chosen potting soils and/or coco/hydro mixes. Apply ensuring an even coverage as a foliar or drench.

Always pre mix Bio-Balance Media in warm water to aid the dissolving process, remove sediment before adding to spray systems or drip lines. It is a natural product and some of it may not dissolve so should be noted for best practice.

What media types are suitable for Bio-Balance Media?

Bio-Balance Media can be used in all media types though it is particularly well suited to alkaline soils.

What is the pH range of Bio-Balance Media?

Bio-Balance Media is the product of choice for alkaline media preferences. In its' raw state pH is 9-10, as a result, care should be taken when using as a soil drench on acid loving plants. A better option would be to use Bio-Balance Foliar in such instances.



+FOLIAR FEED
+NUTRIENT
+CONTAINS
+DEVELOPS
+CONTAINS

PRODUCT
Created by
Naturally
scavenger
fungicide
many years
spray herb
nutrients

APPLICATION
Mix 1g per
Balance
Tip: Bio-B
K+A.M.I.
of a tea

STORAGE
Keep all
HEALTHY
Keep out
with eyes

Distrib
Sun-Kar
Inhibi
berry

Standard stock sizes
50g & 1kg packs.
Other sizes available to
order. Please contact us
for further details.

What is Bio-Balance Foliar?

Bio-Balance Foliar is a dry powder containing a highly pure concentration of natural fulvic acid. Possibly the most important of the organic acids in natural humus, fulvic acid stimulates a wide range of beneficial metabolic processes in both plants' and soil microbiology.

Why should I use Bio-Balance Foliar?

Natural high purity fulvic acid powder acts to improve the conditions of growing media, maintaining acid conditions for erracious plants and perennials. **Bio-Balance Foliar**, improves the transport of nutrients by leaf or root through the chelation and the retention of both nutrients and moisture. **Bio-Balance Foliar** helps to regulate stomata cells so helping prevent water loss in times of drought and high heat and can improve growth conditions in low light and cool temperatures. It is an effective stimulant of fungi, a vital component of soil systems, especially for perennials and acid loving plants.



When should I use Bio-Balance Foliar?

Bio-Balance Foliar can be applied across the growing season to harvest, at least once every 28 days, it can be applied more frequently if so desired or in heavily managed systems. **Bio-Balance Media** can be used as a stand alone product, or with any other nutrient, organic or chemical, as both a soil drench or as a foliar application. Outside, **Bio-Balance Foliar** can be a useful gardening tool to assist plant growth in cold, low light conditions or to limit stress caused by drought and high heat. It can also assist in the prevention and management of soil compaction. The organic acid in **Bio-Balance Foliar** contains a lower molecule size than **Bio-Balance Media** and works well in all spray and drip systems. **Bio-Balance Foliar** has a high percentage of Oxygen atoms which become available once added to media or plant canopies supporting both roots and microbes. **Bio-Balance Foliar** also helps to scavenge free radical ions which are a root cause of soil compaction and rot stress in managed systems and nature. It can be applied throughout the season or as required, as a plant tonic.

How do I use Bio-Balance Foliar?

Bio-Balance Foliar is a powerful product. It should be pre mixed and tested before adding to tanks and sprayer systems, standard for all inputs. When using in a spray or dripper system, be sure to filter out any undissolved sediment to prevent nozzle blockages. Once fully dissolved, **Bio-Balance Foliar** can help reduce the calciferous build up on irrigation lines. We recommend frequent usage in such systems to ensure maximum efficiency. The rate of application is 1g per 4L (1/5tsp per 1.2gallons US). **Bio-Balance Foliar** can be mixed with all Better Organix nutrients and bio-products, it can also be mixed with inorganic nutrients, but should be tested as best practice. Solutions should be drenched through your chosen potting soils and/or coco/hydro mixes. Apply to an even coverage as a foliar or drench. Always pre mix **Bio-Balance Foliar** in warm water and remove sediment before adding to spray systems and drip lines.

Mixed in tanks with **Bio-Veg** and applied across the Vegetative Cycle of short day crops, **Bio-Balance Foliar** gives awesome rates of growth, it can also be added to all compost tea systems.

What media types are suitable for Bio-Balance Foliar?

Bio-Balance Foliar can be used in all media types though it is particularly suited to acidic media types.

What is the pH range of Bi-Balance Foliar?

Bio-Balance Foliar is the product of choice for acid media preferences.

"Easily the fastest, simplest, most economical way to boost CO₂ levels and plant growth indoor or out."

*Andy Dominic
Senior Product Developer, Better Organix*



Standard stock sizes
50g & 1kg packs.

Other sizes available to
order. Please contact us
for further details.

What is Nano Breathe?

Nano Breathe is a plant foliar application, a complex of naturally occurring minerals that has been super fine milled into an easy to use organic micro element and CO₂ leaf spray solution for super boosting the growing potential of your plant.

Why should I use Nano Breathe?

Nano Breathe offers the latest advancement in bio plant growth technology, allowing you as a grower to bend the rules of nature, literally enabling your plant to process up to 1/3 more light than those untreated. Plants with a greater photon carrying capacity, simply have more energy to grow, and we see vastly increased rates of development across all key stage markers, resulting finally in bigger, healthier harvests.



When should I use Nano Breathe?

Nano Breathe is best applied to plants that have a number of existing leaves. Typically, once your plants has around 3 full leaf sets it is time to apply **Nano Breathe**. Depending on your plants, this can be anywhere from 2-4 weeks after germination. Apply **Nano Breathe** approximately every 3-4 weeks, or after a 20% increase in new plant growth. Apply **Nano Breathe** up to harvest, except on short day crops which are traditionally applied for the last time around week 4-5 of bloom.

How do I use Nano Breathe?

Mix **Nano Breathe** with chlorine free water at a rate of 5g/L (1tsp/2.2pints US) and apply using a foliar spray. Care should be taken when applying **Nano Breathe** to ensure the material remains agitated and so suspended in the water. Failure to keep the solution mixed, may result in none of the product making its' way on to your plant. This is because although **Nano Breathe** is extremely fine, it will settle in water over time. Shaking the spray gun continuously ensures correct application. Be sure to cover the underside of the leaves and that all leaves have a good covering. For even coverage we advise using a wetting agent such as our **Bio Hydrate**. Once dry, a white/grey spotting on your leaf surface should be visible, this is perfectly normal, harmless and confirms correct application, although we appreciate it might be seen as unsightly by some. Wetting agents will help reduce this effect, and it will weather over time naturally.

TIP: **Nano Breathe** can be used at ½ strength as a seed wetter. Simply mix 2.5g/L and roll the seeds in the solution. Air dry the seeds before planting. Applying to seeds in this way results in faster germination, with less damping off and faster growth rates.

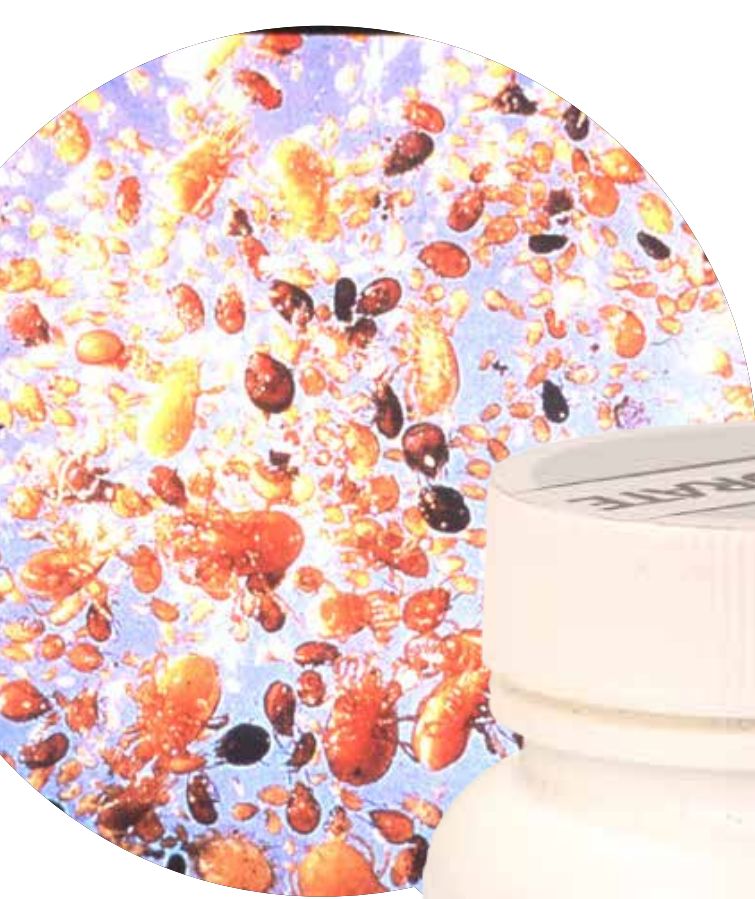
WARNING: Do not over use, as this could create an overload of some elements.

What media types are suitable for Nano Breathe?

As **Nano Breathe** is a foliar applied system, it is suitable for any and all media types.

What is the pH range of Nano Breathe?

Nano Breathe has a wide pH range but should not be used outside of pH 5.5 to 11. For best results, use in near neutral pH 7.0. It is not necessary to pH even in hydroponic media, as it is a leaf application.



• FOLIAR FEED
• IMPROVES
• AIDS THE
GROWTH

PRODUCT
Better Oreatix
tension
to improve
all Better
reduces
range
nutrient
of green

APPLICATION
Mix 2ml
liquids
frequently
feeds. For

STORAGE
Keep
HEALTHY
Keep
eyes &

Standard stock sizes
100ml & 1L bottles.
5L, 10L, 20L, 200L &
1000L available to order.
Please contact us for
further details.

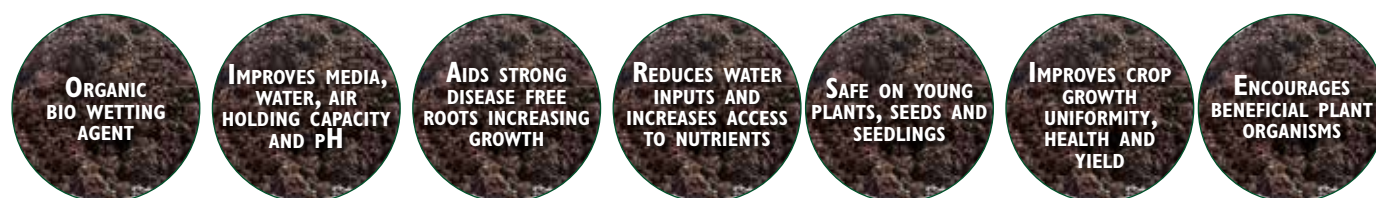
What is Bio-Hydrate?

Bio-Hydrate is a next generation, ultra concentrated, organic wetting agent, penetrator and bio stimulant that is 100% plant safe and non-toxic.

Why should I use Bio-Hydrate?

Bio-Hydrate works to reduce the surface tension of water repellent media, to ensure an even soaking and distribution of water and nutrient solutions even on very dry surfaces, leading to improved growth and plant health with a reduction in overall water inputs. **Bio-Hydrate** also acts to increase the penetration of nutrients and can be used as a wetter in combination with all Better Organix liquid plant feeds and additives, mycorrhizae, bacterial inoculants and as part of a compost tea program.

Bio-Hydrate has a low pH which helps maintain acidic conditions in growing media. Unlike many inorganic wetting agents, it does not stress or kill natural soil biology but acts as a biostimulant to boost the populations of beneficial soil microorganisms.



When should I use Bio-Hydrate?

Bio-Hydrate can be used at all times of your plants growth cycle. It can be added to both soil feeds and foliar leaf sprays from seeds and seedlings, to fully mature plants.

How do I use Bio-Hydrate?

Bio-Hydrate can be applied alone, in combination with inorganic or organic nutrients, tank mixed, used as a soil drench and as a foliar to increase nutrient coverage. **Bio-Hydrate** is an extremely powerful product and should be used at a rate of 5 drops per litre of chlorine free water. Can also be used as part of a compost tea program and can be added at any stage of the brewing process.

What media types are suitable for Bio-Hydrate?

Use **Bio-Hydrate** on any media types, some care may need to be taken if growing plants in alkaline soils. In these cases, **Bio-Hydrate** can be teamed with **Bio-Balance Media** and other Better Organix liquid plant feeds to increase impacts on alkaline loving plants.

What is the pH range of Bio-Hydrate?

The pH value of **Bio-Hydrate** is 3.7- 4.1 and so it typically lowers the pH value of both growing media and your nutrient solutions. Suitable to be used at any pH range, though is very well suited to media types seeking slightly acidic conditions.

SOIL

FLOWERING GROWTH

VEGETATIVE GROWTH

SEED

Product	SEED			VEGETATIVE GROWTH				FLOWERING GROWTH							
	WK1	WK2	WK1	WK1	WK2	WK3	WK4	WK1	WK2	WK3	WK4	WK5	WK6	WK7	WK8
BIO-MEDIA PRO	1g/L														
ROOT BETTER	1g/plant														
BIO-iNitrate				0.5ml/L											
BIO-VEG							1-3ml/L	1-3ml/L							
BIO-FLORET												3ml/L	3ml/L	1,5ml/L	1ml/L
K+AMINO				0.5ml/L			0.5ml/L	1ml/L				1ml/L	1ml/L		
BIO-BALANCE MEDIA								2.5g/L							
BIO-BALANCE FOLIAR				1.5g/L	1.5g/L	1.5g/L	1.5g/L							1g/L	1g/L
BIO-HYDRATE	4-5 drops/L	4-5 drops/L		4-5 drops/L	4-5 drops/L	4-5 drops/L	4-5 drops/L	4-5 drops/L	4-5 drops/L	4-5 drops/L	4-5 drops/L	4-5 drops/L	4-5 drops/L	4-5 drops/L	4-5 drops/L

DRENCH

FOLIAR

Product	WK1	WK2	WK1	WK2	WK3	WK4	WK1	WK2	WK3	WK4	WK5	WK6	WK7	WK8
	NANO BREATHE					5g/L					5g/L			
BIO-HYDRATE					4-5 drops/L					4-5 drops/L				

Young plants often have delicate root structures which can be easily unbalanced by heavy handed nutrient application. In such circumstances you may find it helpful to apply feeds as a foliar leaf spray. We recommend the dose to 1/3 of the soil drench rate. It is not recommended to spray plants in bright sunlight, during heavy rainfall or in periods of high humidity.

Conversely, periods of extended dryness can be managed effectively by regular foliar applications. Which can be used to manage environmental factors which might otherwise impact optimal growth. Again do not apply during bright sunlight.

HYDRO · COCO · SOILLES

DRENCH

SEED

VEGETATIVE GROWTH

FLOWERING GROWTH

Product	WK1	WK2	WK1	WK2	WK3	WK4	WK1	WK2	WK3	WK4	WK5	WK6	WK7	WK8
BIO-MEDIA PRO	1g/L													
ROOT BETTER	1g/L	1g/L	1g/L	1g/L	1g/L									
BIO-INITIATE				1-3ml/L	1-3ml/L		1-3ml/L		1-3ml/L					
BIO-VEG						1-3ml/L		1-3ml/L		1-3ml/L			3ml/L	
BIO-FLORET												3ml/L	3ml/L	1ml/L
K+AMINO	0.5ml/L						1ml/L		1ml/L			1ml/L		
BIO-BALANCE MEDIA														
BIO-BALANCE FOLIAR				1g/L	1g/L		1g/L	1g/L	1g/L	1g/L	1g/L	1g/L	1g/L	1g/L
BIO-HYDRATE	4-5 drops/L	4-5 drops/L	4-5 drops/L	4-5 drops/L	4-5 drops/L	4-5 drops/L	4-5 drops/L	4-5 drops/L	4-5 drops/L	4-5 drops/L	4-5 drops/L	4-5 drops/L	4-5 drops/L	4-5 drops/L

FOLIAR

Product	WK1	WK2	WK1	WK2	WK3	WK4	WK1	WK2	WK3	WK4	WK5	WK6	WK7	WK8
NANO BREATHE			5g/L			5g/L				5g/L				
BIO-HYDRATE			4-5 drops/L			4-5 drops/L				4-5 drops/L				

- Mix nutrients solution and measure pH. If reading falls outside of the tolerance range of your chosen media correct with pH up or down.
- This is a feed each time system, little and often is the key to success.
- Products such as K+Amino and Bio-Balance Foliar can be used as a foliar application in between drench feeds.
- Foliar applications during vegetative growth help promote environment conditions better suited to vigorous plant growth.



